

RANSFLEX RXi ELECTROSTATIC SPRAY GUN

Sprays water based paints without isolation equipment

Ransburg®



The all new RansFlex RXi 45kV spray gun delivers features and benefits that surpass all other electrostatic applicators. RXi is a low pressure air atomising electrostatic spray gun powered by an inbuilt turbine generator. Designed with the operator in mind, the handle incorporates many fit and feel improvements with better balanced weight to reduce operator fatigue.

RXi uses indirect electrostatic charging technology which means there is no longer any need to isolate the waterborne paint feed containers or paint pumps with expensive isolation cages or tanks, saving users significant expense and floor space.

DeVilbiss World renowned air cap atomisation technology is coupled with Ransburg electrostatic power to provide superior atomization, transfer efficiency and performance, all backed by a 5-year limited warranty.

Universal Water Based Paint Compatibility –

Sprays straight from your regular paint pumps or pressure feed tanks without the need for expensive isolation tables or enclosures.

World Renowned DeVilbiss Atomisation Technology –

For superior atomization and finish quality.

Ergonomic Fit and Feel with easy to use Controls –

The curved gun handle required less “grip-force” with a softer trigger pull which means users experience less joint or muscle strain reducing the risk of RSI and operator fatigue. On/Off voltage switch is on the gun.

Triple Turbine Protection –

Three phases of turbine protection include a divorced turbine air supply cartridge, sealed nozzle/atomisation passages and the strategic turbine location provide a long trouble free working life.

Typical applications

- Aerospace Industry
- General Metal Spraying
- Marine and Yacht applications
- Commercial and off Road Vehicles
- Intricate, irregular shaped parts
- Plus many others...



**RANS
FLEX**
By Ransburg

CarlisleFT.com



RansFlex Key Benefits

- Stylized, user friendly knobs. Easy adjustment even with a gloved hand.
- Removable proprietary cascade.
- Optional quick disconnect built into applicator handle.
- Stamped metal trigger for strength and durability.
- Cast stainless steel fluid bracket.

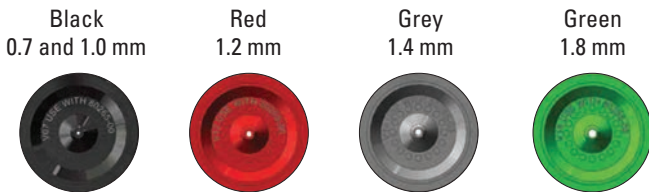


Probes built into the air cap horns for ease of painting in tight areas. Applicator atomisation components stay cleaner with no probe in the fluid path to get dirty or damaged.

Nozzle Selection with TI-40 Air Cap.

Nozzle Part Number	TI-40 Air Cap part number	Fluid Tip	Size	Pressure Reducer
80239-07	80383-00 LVMP/TRANS-TECH	Black	0.7 mm	74963-05
80239-10	80383-00 LVMP/TRANS-TECH	Black	1.0 mm	74963-05
80239-12	80383-00 LVMP/TRANS-TECH	Red	1.2 mm	74963-05
80239-14	80383-00 LVMP/TRANS-TECH	Grey	1.4 mm	74963-05
80239-18	80383-00 LVMP/TRANS-TECH	Green	1.8 mm	74963-05

Fluid Tip Identification

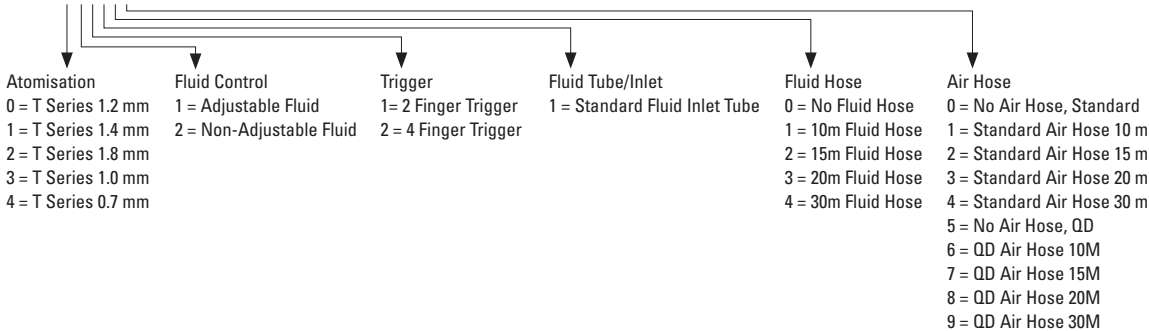


45kV model is available with the universal TI-40 cap only.

Part Number Ordering Example for a 45kV model:

When ordering use 80445-A,B,C,D,E,F. 6 digits must follow to provide the correct part number.

80445-ABCDEF



For the full range of tips/caps/accessories, operating instructions and technical information please refer to the RansFlex RXi Service Bulletin.

Sales and Service through our Global Network of Distributors

Carlisle Fluid Technologies Locations

- Americas: **USA ■ Mexico ■ Brazil**
- Europe/Asia/Africa: **United Kingdom ■ France ■ Germany ■ Switzerland ■ India**
- Pacific Rim: **China ■ Japan ■ Australia**



www.CarlisleFT.com

email: marketing@CarlisleFT.eu

